

# MARINE TERRACE

마린 테라스

HAHN International Architects / Jongruhl Hahn

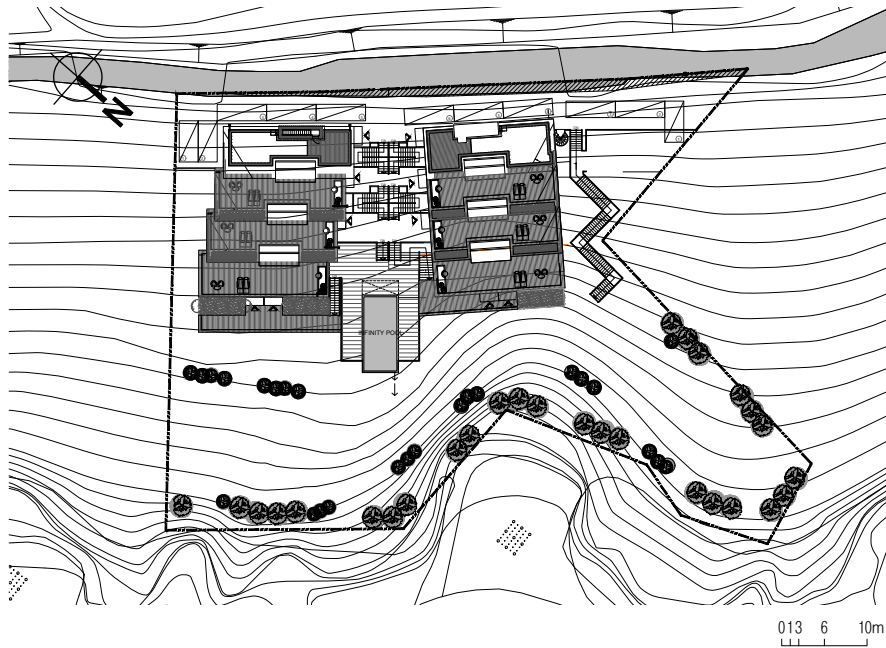
한중률 도시건축 / 한중률



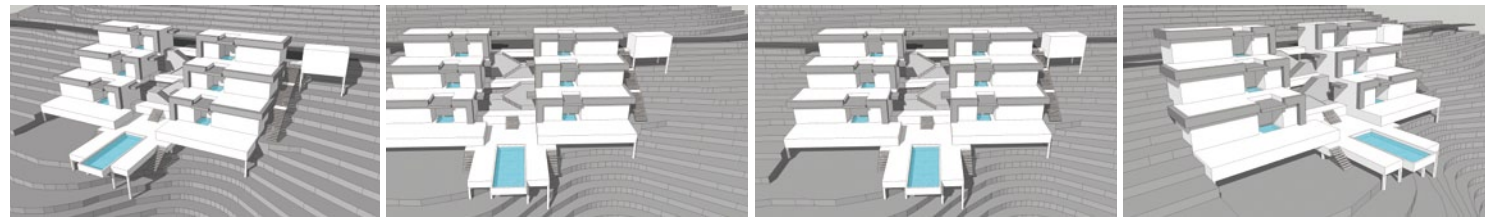


**Location** 674-12, 674-14, Anpo-ri, Hwayang-myeon, Yeosu-si, Jeollanam-do, Korea  
**Function** Pension  
**Site area** Unit A: 1,525m<sup>2</sup>, Unit B: 1,627m<sup>2</sup>  
**Bldg. area** Unit A: 310m<sup>2</sup>, Unit B: 324m<sup>2</sup>  
**Total floor area** Unit A: 311m<sup>2</sup>, Unit B: 334m<sup>2</sup>  
**Stories** B1, 1FL  
**Structure** Reinforced concrete  
**Photographer** Pensionnara

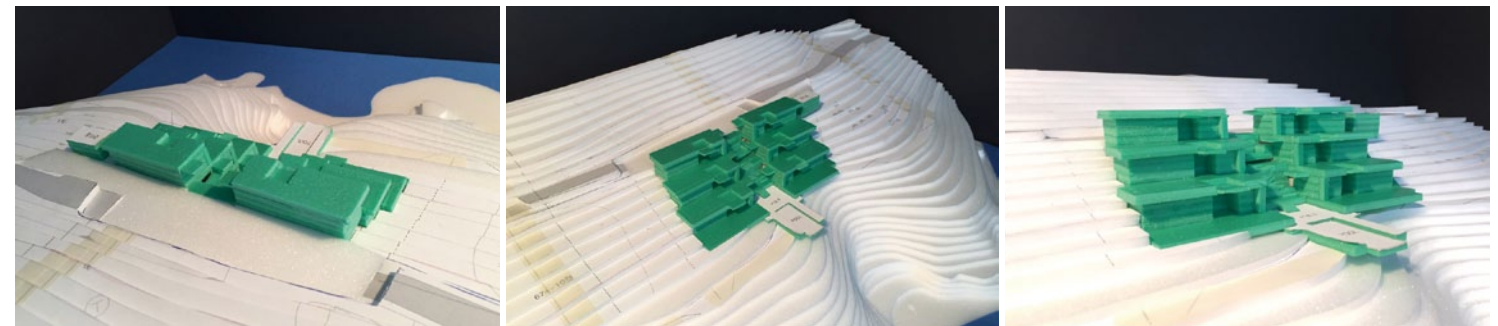
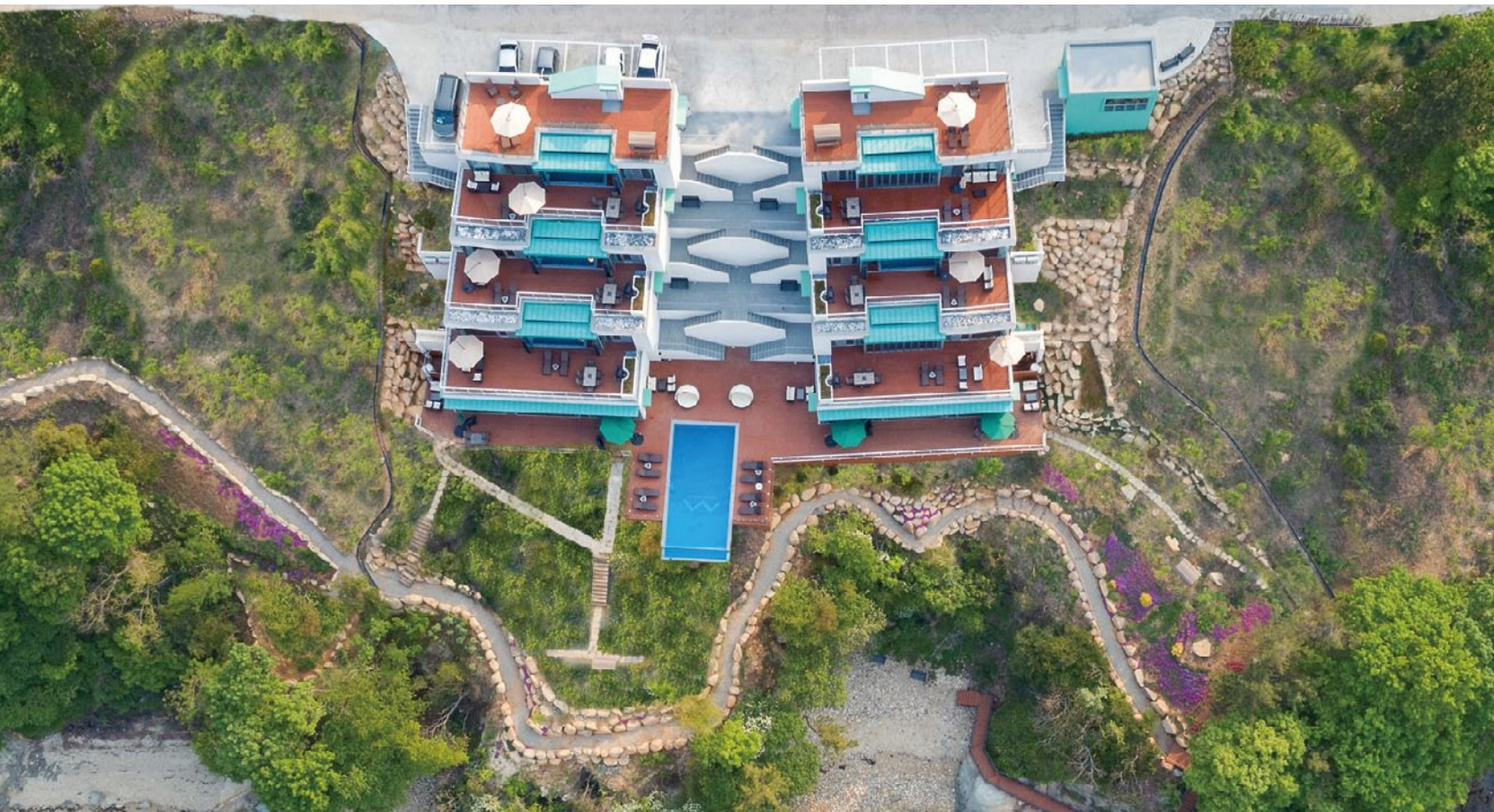
**위치** 전남 여수시 화양면 안포리 674-12, 674-14  
**용도** 펜션  
**대지면적** A동 1,525㎡, B동 1,627㎡  
**건축면적** A동 310㎡, B동 324㎡  
**연면적** A동 311㎡, B동 334㎡  
**규모** 지하1층, 지상1층  
**구조** 철근콘크리트  
**건축주** 김영미, 안경선  
**시공** 김영미, 안경선  
**사진** 펜션나라



Site plan



3D



Model

The first concept was the Floating Box. The site was steep from the entrance road to the sea, so it was impossible to enter the car, and it was difficult to realize the architectural plan of eight annex buildings that the client wanted.

In order to maximize the beautiful view of Yeosu across the sea and to secure the necessary privacy for individual units, we adopted the concept of a terrace house with nested 4m × 15m square layout and decided the section through minimum nature destruction.

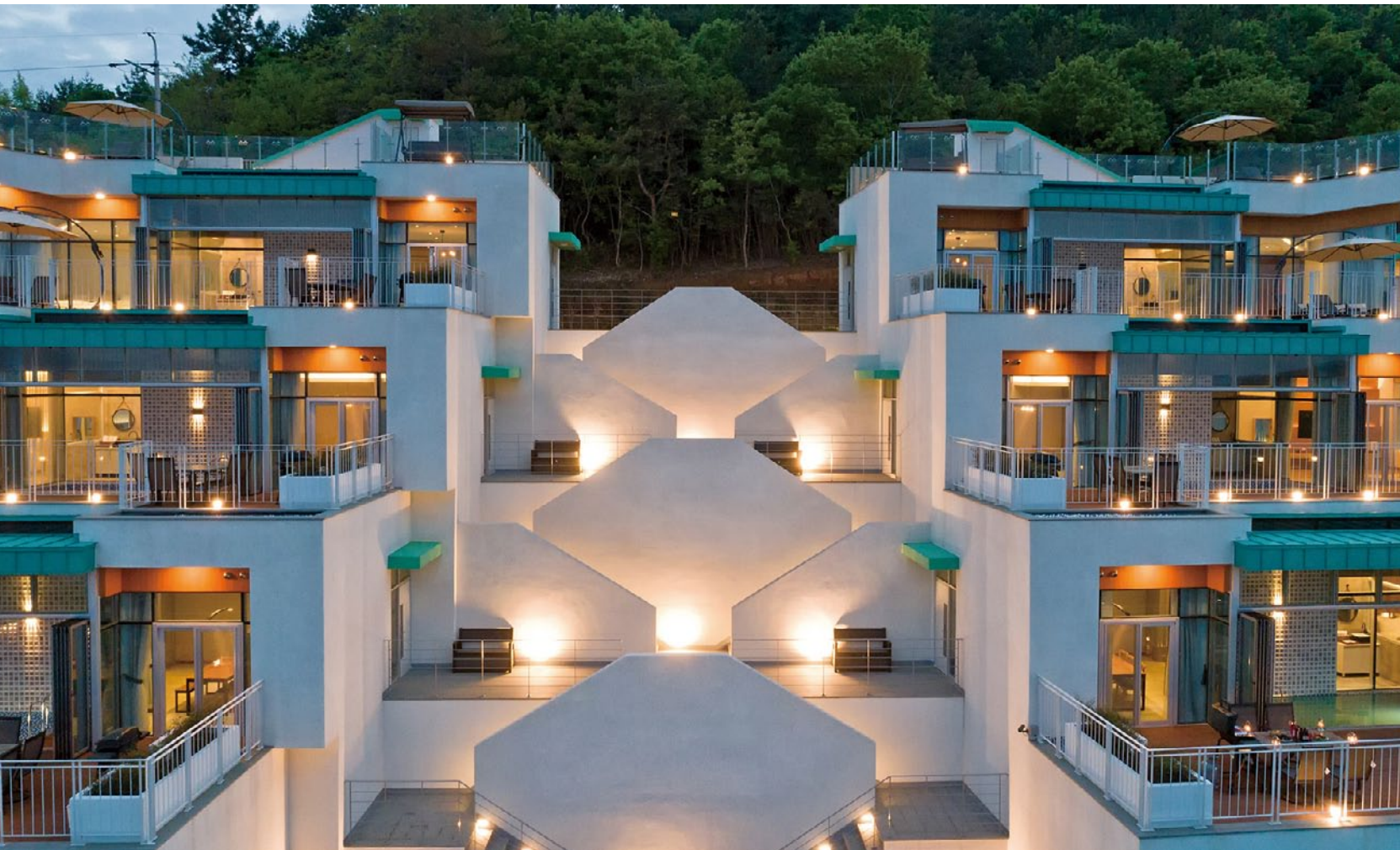
Each unit is 66m<sup>2</sup>, but the roof on the lower floor becomes a terrace, creating a personal area that can comfortably use indoor and outdoor spaces of 132m<sup>2</sup>. It is hoped that it is a loving place to get away from busy daily life, relax with family and lovers, and create new memories.

처음 구상한 개념은 Floating Box이었다. 대지는 진입도로에서 바다 쪽으로 급경사를 이루는 형태라 차량진입이 불가능하였고 건축주가 생각하고 있던 8채의 별동 건축 안은 실현하기 어려웠다.

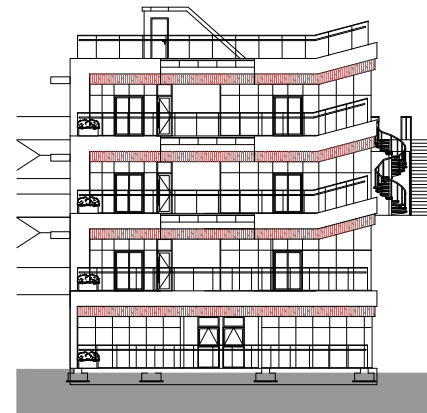
때문에 바다 건너 펼쳐지는 여수의 아름다운 경관을 극대화하고 개별 유닛에 필요한 프라이버시를 확보하기 위해 4m×15m의 장방형 평면이 중첩된 테라스하우스 개념을 도입하여 자연을 최소한도로 훼손하는 단면으로 결정하게 되었다.

각 유닛은 20평씩이지만 아래층의 지붕이 테라스가 되어 40평의 실내·외 공간을 편안히 사용할 수 있는 개인적인 공간이 만들어졌다. 분주한 일상에서 떠나와 가족끼리, 연인끼리 휴식을 즐기고 새로운 추억을 만들어 가는 사랑 받는 마린 테라스로 거듭나기를 기대해 본다.

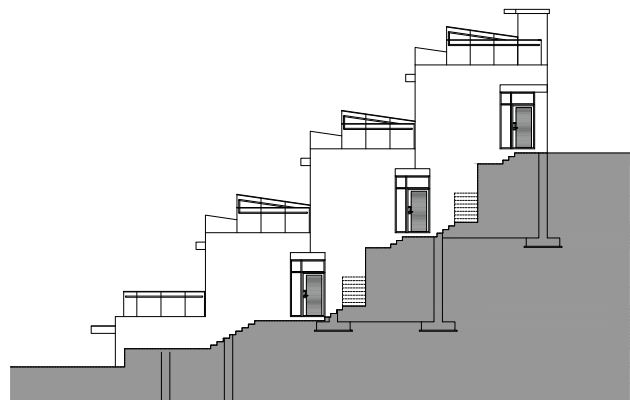




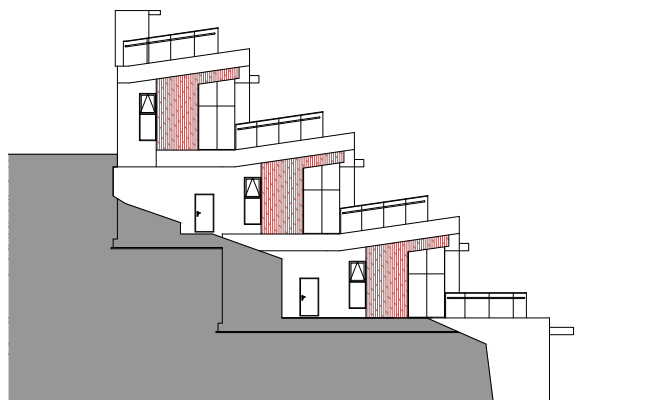
Unit A - front elevation



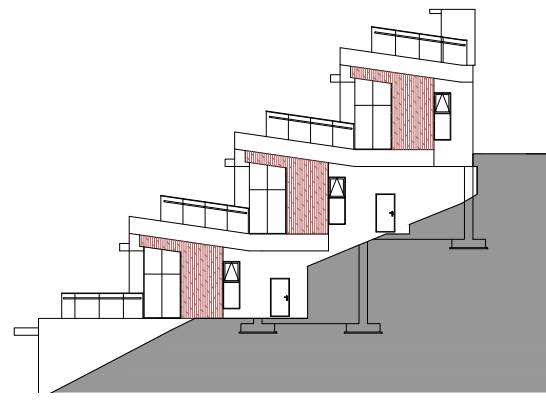
Unit B - front elevation



Unit A - right elevation



Unit A - left elevation

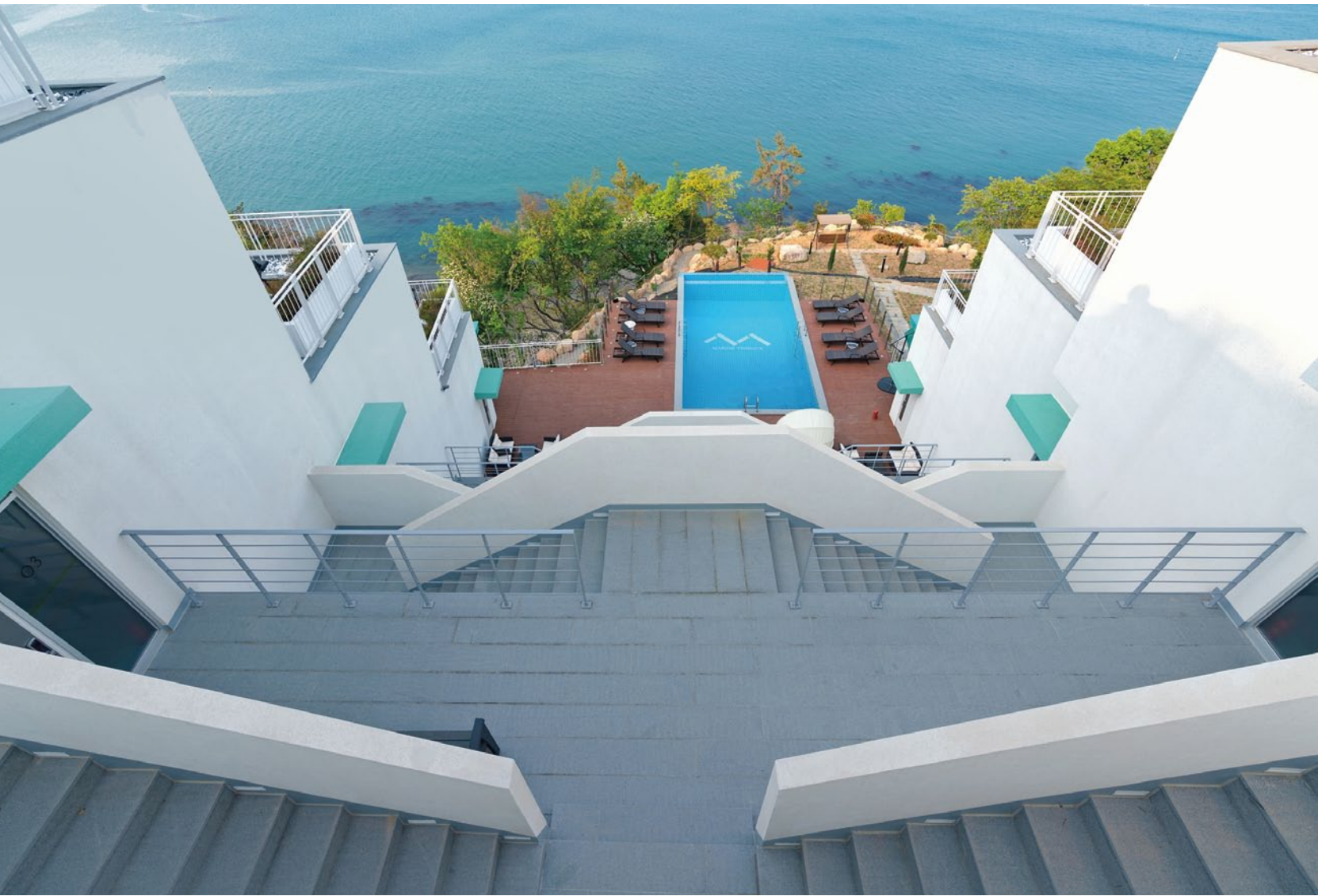


Unit B - right elevation

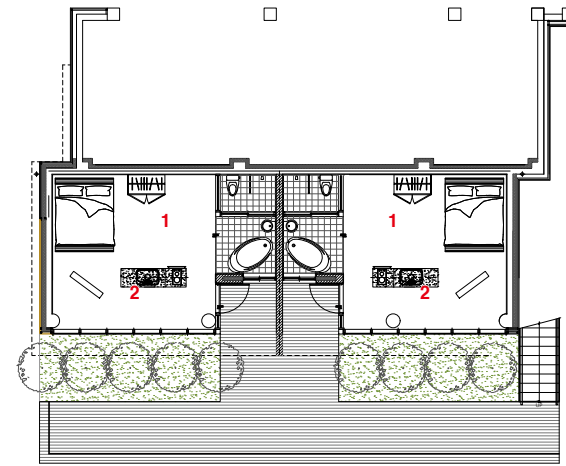


Unit B - left elevation

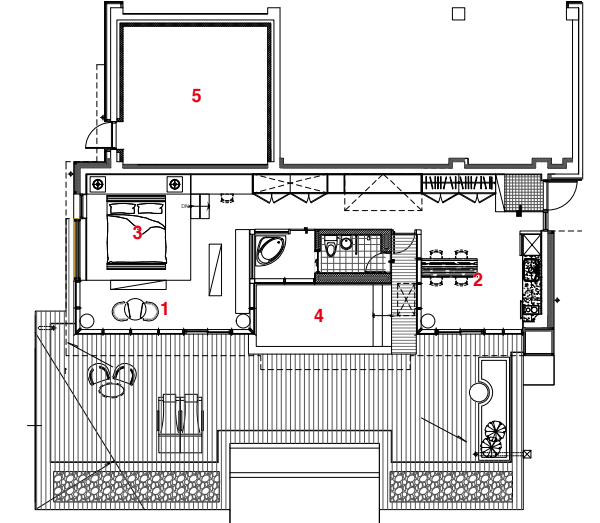




- 1. Living room
- 2. Kitchen / Dining room
- 3. Bedroom
- 4. Pool
- 5. Water tank

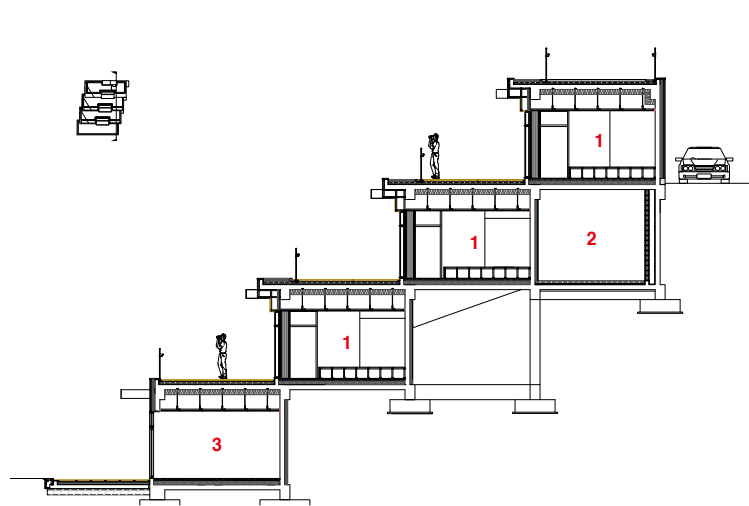


Unit A - type 00 floor plan

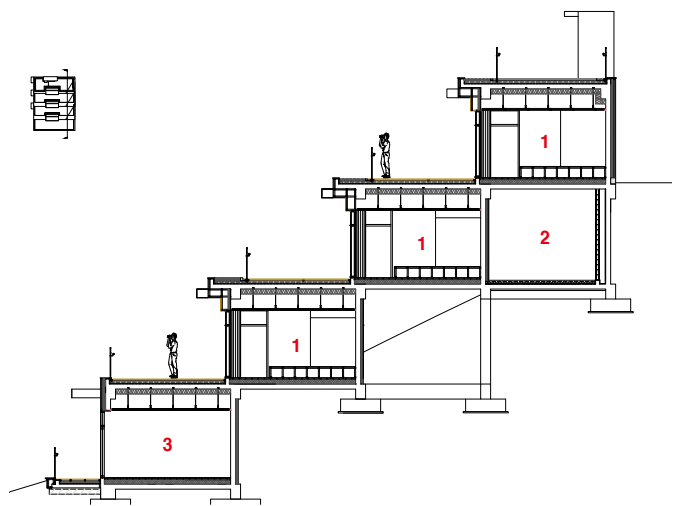


Unit A - type B floor plan

- 1. Bedroom
- 2. Boiler / Water tank
- 3. Bedroom / Living room

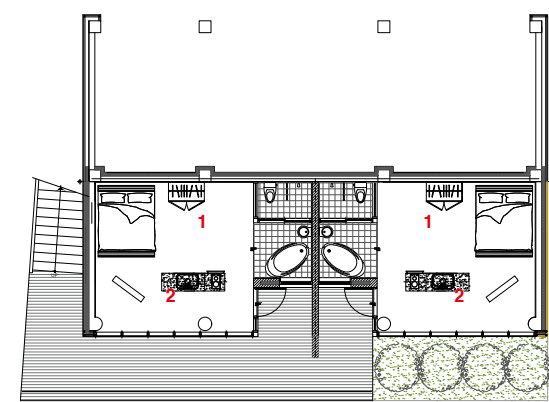


Unit A - section

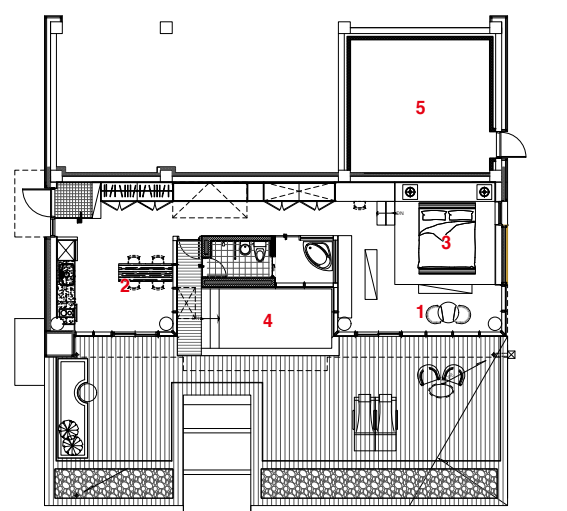


Unit B - section

0 1 3 6 10m



Unit B - type 00 floor plan



Unit B - type B floor plan

0 1 3 6 10m